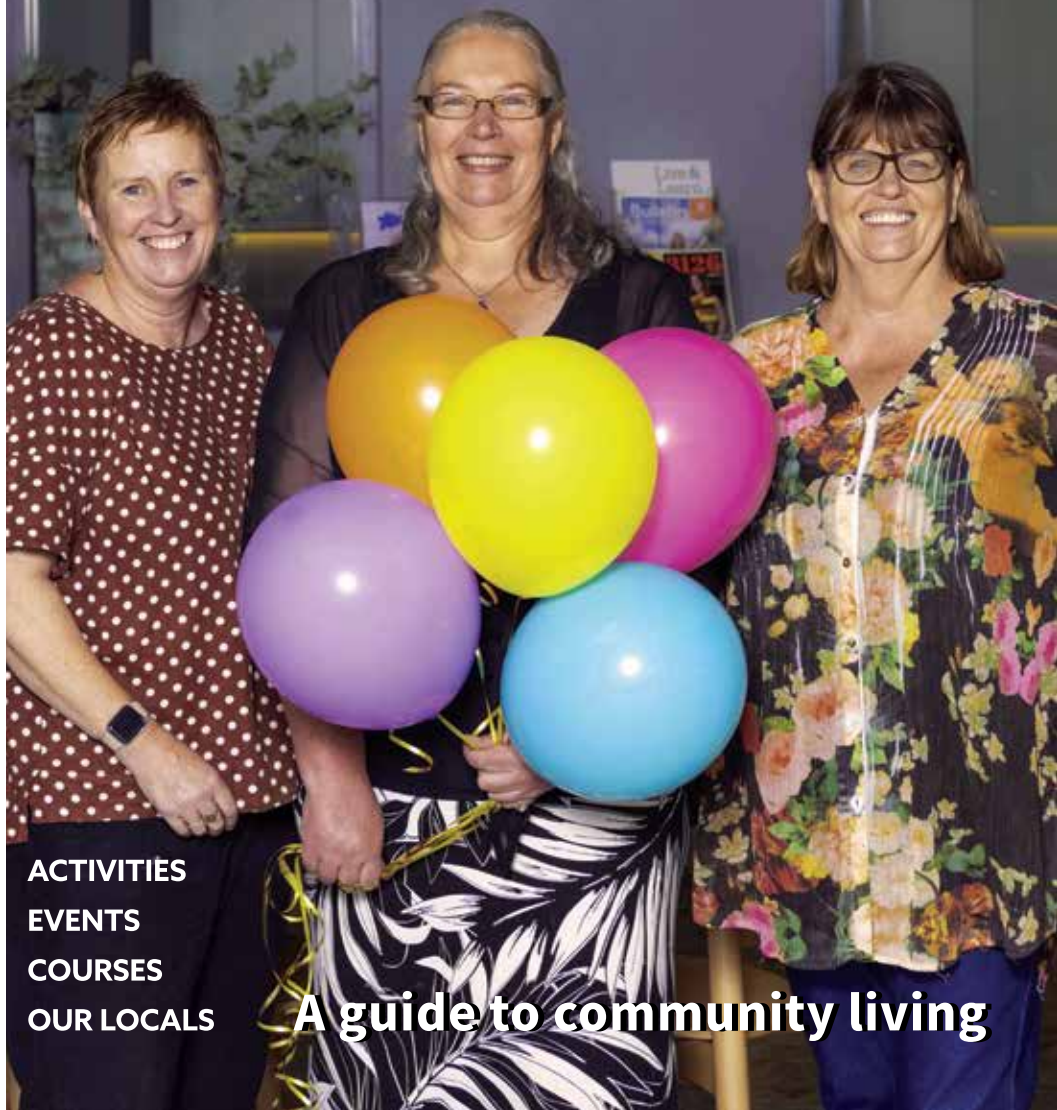


3126

AUTUMN 2023



ACTIVITIES
EVENTS
COURSES
OUR LOCALS

A guide to community living

3126

About the magazine

3126 is an independent community magazine produced quarterly by a small team of local volunteers, supported by Canterbury Neighbourhood Centre (CNC).

The editorial team welcomes feature article ideas and suggestions, as well as more volunteers to assist with the publication.

The magazine is loyally distributed by a group of volunteers co-ordinated through the Canterbury Community Action Group (CCAG) www.ccag.net.au

3126 MAGAZINE

2 Kendall Street
Canterbury VIC 3126
3126@canterburync.au
03 9830 4214



Front cover (left to right): *Kelly O'Meara (Playstation), Tracey Martin (Canterbury Neighbourhood Centre) and Karen Szabo (Canterbury Gardens Kindergarten).* Image by Ray Gruchy

ALL RIGHTS RESERVED

All content in this publication is copyright and may not be reproduced in whole or in part in any form without the express permission of the publisher. The views and opinions expressed in this publication are those of the businesses represented in this issue and not necessarily Canterbury Neighbourhood Centre. All care is taken to ensure the accuracy in editorial and advertising however the material constitutes information and not advice.



Tracey Martin
Manager
CNC



Anna Martin
Community
Engagement
CNC



Jenny Norvick
Writer & editor
Volunteer



Philippa Davies
Proofing
Volunteer



Margot Hennessy
Article research,
proofing & distribution
Volunteer



Joanne Marchese
Graphic design &
production
Volunteer



Ray Gruchy
Photographer & writer
Volunteer

3126

We're so excited – the Precinct is finally here!

Nestled in the historic Canterbury Gardens, it is a place of vibrant, joyful, and welcoming spaces filled with opportunity for everyone.

The building embraces the heritage of the site, with the restored former Canterbury Bowls Club pavilion blending seamlessly into the new building where high timber ceilings frame a relaxed and modern interior.

More than just a building though, the precinct brings together a range of community-based organisations and Council services working together for the whole community. From early years education and care, disability and wellbeing services to community programs and activities, a community garden and two history groups, there is truly something for everyone.

The Canterbury Community Precinct offers a place to gather, relax, sit and enjoy a cuppa in the light filled lounge, or to get involved, join a class, suggest an activity or volunteer; it's your space.

The Precinct is open weekdays between 9am and 4pm, we invite you to come in and have a look around.



What is a Neighbourhood

Anna Martin

If you had asked me about Neighbourhood Houses a few years ago, I might have described a place that offers social activities, primarily for retired local residents.

However, after working for Canterbury Neighbourhood Centre for more than three years now, I would describe a Neighbourhood House as a far more dynamic organisation; it's complex (and sometimes messy) but ultimately, it's a collection of committed people driven to benefit the community. In short, it's community development.

...it's a collection of committed people driven to benefit the community.

Community development is a holistic approach to social change incorporating principles such as inclusion, self-determination and collective action. Community members are empowered and recognised to be experts in their neighbourhood to make stronger, more connected communities.

Known as community centres, neighbourhood or learning centres, Neighbourhood Houses are inclusive, community-led organisations whose purpose is to support social connection.



The Neighbourhood House sector in Australia began in the early 1970s as part of a wider social change led primarily by women seeking access to learning opportunities and community activities. However, promoting “social interconnectedness” can be traced back even further to the settlement house reformist movement that began in 1880s in the UK and spread to the United States.

Today, there are more than 400 neighbourhood houses across Victoria providing activities to more than 200,00 Victorians each week.

What makes the Neighbourhood House sector interesting is that each Neighbourhood House is unique. Neighbourhood Houses build on the strengths and the needs of the local community they serve. For some communities, their local Neighbourhood House might focus on adult learning,

House?

each Neighbourhood House is unique. Neighbourhood Houses build on the strengths and the needs of the local community they serve.



supporting training pathways to employment. Other Houses might support access to Government services or play a critical role in supporting communities in the aftermath of local emergencies such as bushfires or floods.

One of the assumptions around Neighbourhood Houses is that their sole purpose is to address social disadvantage. Within this framework, it is unlikely Canterbury would be identified as a suburb in urgent need for a Neighbourhood House.

However, the core purpose of Neighbourhood Houses is to build social connection, combat social isolation and address loneliness. Everyone should feel a sense of connection and belonging. It might sound cheesy, but having a place where people know your name contributes to an intrinsic sense of belonging that is critical for our overall health.

Feeling lonely is not the same as being alone, but instead loneliness is a feeling of disconnection to those people around you. Loneliness affects all ages and all demographics and recent research shows that more of us regularly feel lonely. Building community connection to address loneliness is a key strength of Neighbourhood Houses.

Volunteers remain at the core of Canterbury Neighbourhood Centre and bring a wealth of knowledge, experience and expertise. They often drive the programs we offer, identify gaps and let us know when we get it wrong. Neighbourhood Houses also require dedicated staff to identify and drive initiatives, seek and manage funding opportunities, reporting and create partnership strategies.

The new Canterbury Community Precinct provides an extraordinary opportunity for all of us to build a greater range of activities and pursue new projects and we want to hear from you. Get involved, make some noise and become part of our next stage. It's going to be amazing!

Anna Martin (pictured above) is the Community Engagement and Programs Coordinator, Canterbury Neighbourhood Centre. Share your ideas and feedback to engagement@canterburync.au



Short courses & activities at Canterbury Neighbourhood Centre



The Arts

Introduction to nature in art – SPECIAL WORKSHOP

Interested in botanical watercolour art but not sure where to start? Spend a day with our botanical artist Terry Napier who will introduce you to his unique watercolour techniques. Beginners welcome and all materials are supplied for the workshop.
Saturday 13 May (5hrs)
Cost: \$120

Nature in art

Renowned botanical artist Terry Napier will guide you through watercolour techniques to illustrate the botanical world.
Monday 9.30am OR 12.30pm (2.5hrs)
Term: 7wks \$196

Introduction to DSLR and mirrorless photography **NEW**

Move beyond using an automatic camera with this introduction to manual photography with a DSLR. Tutor Ray Gruchy will cover shutter speed, aperture, ISO and more. Ideal for a beginner or anyone needing a refresher.
Tuesday 6.30pm (2 hrs)
Term: 3wks starting 23 May \$120

Linocut printing – nature designs

Discover the joy and relaxing process of linocut carving, creating a nature inspired block stamp. Learn how to print onto paper, cards and fabric and take home your own carved tile.
Saturday 3 June 10am (2.5 hrs)
Cost: \$65

Floral native mosaics

Discover the magic of mosaics making your own floral decorative tile.
Saturday 22 July 10am (3hrs)
Cost: \$85

Upholstery and soft furnishing

Reinvigorate that tired piece of furniture or create a new cushion and accessories. Our professional upholsterer will give you the skills and confidence to tackle a range of projects.
Wednesday 9.45am OR 12.45pm (2.25hrs)
Term 9wks \$250
OR Wednesday 6.45pm (via Zoom)
Term: 9wks \$234

Open art NEW session

Explore your own creative style in your chosen art medium – including drawing, watercolour, acrylic, oil or copic markers with art tutor Karen Nield.

Thursday 10am (2hrs)

Term: 9wks \$234

Children & Families

Creative movement – preschool NEW

Creative movement offers an expressive, imaginative, joyful and magical experience for young children. Combining yoga, dance, storytelling and play led by a qualified yoga and creative movement educator.

Wednesday 10am. Taking expressions of interest. Contact the Centre.

Structured playgroup – all ages

Facilitated by an early childhood educator, toddlers and pre-schoolers learn new skills through play, games, stories and music. Parents, grandparents or carers are encouraged to join in. Children under 12 months free.

Monday 9.30am (2hrs)

Term: 8wks \$120

Steiner playgroup – all ages

Facilitated by an early childhood educator in the style of Steiner philosophy. Parents, grandparents or carers are encouraged to join in. Children under 12 months free.

Friday 9.30am (2hrs) Taking expressions of interest. Contact the Centre.



Gardening & Sustainability

Vegetable companion planting and edible gardens NEW

Have a bountiful veggie patch by learning companion planting and soil improvement to ensure a good crop all year.

Saturday 3 June 10am

Cost: \$40

Garden club

Enjoy guest speakers, exchange plants or seeds and chat with fellow gardeners over afternoon tea. Beginners to experienced green thumbs welcome.

Next meeting 16 May.

Third Tuesday of the month, 1pm (2hrs)

Annual fee: \$20



The Written Word

Writing life

Structured lessons to guide you in capturing and sharing your valuable memories and anecdotes from your life and family history.

Tuesday 10am (2hrs)

Term: 8wks \$190

Write Now! NEW

Set at a dedicated time and place to work on your writing project. Enjoy support and encouragement from other writers, led by an experienced tutor.

Tuesday 1pm (2hrs)

Term: 8wks \$190

Language

French absolute beginners **NEW**

Tuesday 10.30am (2hrs)

Term: 8wks \$195

French intermediate (2+ years' experience)*

Tuesday 1pm (2hrs)

Term: 8wks \$195

French intermediate (3+ years' experience)*

Monday 1pm (2hrs)

Term: 8wks \$195

French advanced (4+ years' experience)*

Monday 10.30am (2hrs)

Term: 8wks \$195

Italian absolute beginners **NEW**

Thursday 12pm (2hrs)

Term: 9wks \$220

Italian beginners/intermediate (2 years' experience)*

Wednesday 3pm (2hrs)

Term: 9wks \$220

Italian advanced (4 years+ experience; via Zoom)

Thursday 1pm (2hrs)

Term: 9wks \$220

Italian advanced – Language & Conversation (6 years+ experience)*

Wednesday 9.30am (2hrs)

Term: 9wks \$220

Social

Community kitchenette

Make yourself a coffee or tea and sit down and enjoy a magazine in our foyer.

Weekdays, 9am–4pm

FREE

Chatty cafe **NEW**

Get to know other locals and make new friends over a cup of tea or coffee. All welcome.

Wednesday 10am (1hr) starting 10 May.

FREE

Craft group **NEW**

Bring along your creative project and chat with other friendly makers who enjoy knitting, embroidery, crochet and more.

Friday 10am (2hrs) starting 5 May.

Free for CNC members

Community library

Take a book, share a book. Our community library is available weekdays from the foyer.

We have a full range of thriller, history, biography, literature and more as well as children's books.

Weekdays, 9am–4pm

FREE

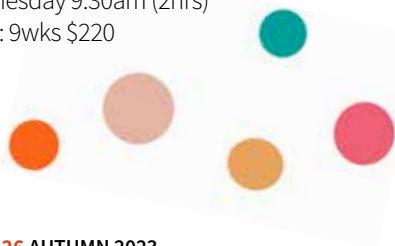
Canterbury historical walking tour

Take a walk back in time and learn all about Canterbury's characters and buildings led by James Nicholls. This tour sells out quickly so book early to avoid missing out!

Thursday 25 May

10am or 2pm (1.5hrs)

FREE but registration is essential.



Mah Jong

A classic game of strategy and skill.

New players welcome.

Friday 10am (2hrs)

Term: 11wks \$50

Book circle

Meet up for lively discussions on books, films, community activities and events.

Second Tuesday of the month, 10am (2hrs)

Free for CNC members

Bridge club

Wednesday 12pm (5hrs)

Wellbeing

Mat Pilates – Evenings NEW

Wind down at the end of a busy day with our mat-based Pilates class.

Tuesday 7.30pm

Term: 8wks \$144

Buff bones for osteoporosis

A Pilates-based full body workout for bone strengthening and balance, integrated with strength training and functional and rehabilitative exercises.

Thursday 9.30am OR 10.45am (1hr)

Term: 9wks \$162

Tai chi

A gentle integrated mind and body exercise with a focus on control of movements and breathing for overall wellbeing.

Monday 12.30pm OR 1.45pm OR 3pm (1hr)

Term: 7wks \$126



Walking group

Get fit and make friends. Enjoy a walk through the streets and gardens of Canterbury, ending with a coffee at one of our local cafes.

Thursday 9.30am (1hr)

Free for CNC members

Yoga (beginners to intermediate)*

Hatha yoga uses stretching techniques to release tension, increase flexibility and create a sense of calm.

Tuesday 9.15am OR 10.30am (1hr)

Term: 8wks \$144

Zumba gold

Zumba Gold combines Latin and International music with a fun and effective workout system designed for lower impact than traditional Zumba.

Wednesday 9.30am (1hr)

Term: 9wks \$162



For class bookings visit our NEW website:

www.canterburync.au

Call us: 9830 4214

Send us an email:

office@canterburync.au

Follow us: facebook.com/canterburync

instagram.com/canterburync





Canterbury Bowling Club lives on in the new Canterbury Community Precinct

All too frequently when a building has outlasted its original purpose, it is knocked down. It is heartening to see that the former Canterbury Bowling Club pavilion has been incorporated into the new Community Precinct.

The Canterbury Bowling Club was founded in February 1900, at a meeting held in Golding's Recreation Hall. A fund for purchasing land, building the clubhouse and for laying, fencing and watering the greens was set up by issuing up to one hundred debentures of £5 each. The initial payment would be £1 and the rest paid in instalments.

This list of debenture holders included many public-spirited citizens who since the 1880s had been involved in establishing and supporting churches and various clubs in Canterbury. The list included Boroondara shire councillors: importer and merchant, George Granville Mercy, wholesale merchant, William McBeath, and lawyer Robert Beckett.

They secured allotments 13 and 14 on the subdivision of Logan's Estate near

Canterbury Station and put down a six-rink green, surrounded by attractive flower beds. The green was opened on 10 November 1900.

In October 1903, the membership had increased so the club purchased an adjoining 70 feet of land so it could add two more rinks and a croquet lawn for the women. However, the flower beds, with their hundreds of roses, had to be sacrificed.

During the early 1960s, interest in playing croquet declined and in 1963 the croquet green was converted to a four-rink bowling green and a Ladies' Bowling Club was formed, which rapidly became a social and financial asset for the club.

One more recent distinguished member of the club was Sir Robert Menzies, member for Kooyong from 1934 to 1966, and Australia's longest serving Prime Minister. For more than 30 years it became a tradition for him to open the bowling season each September. His wife, Dame Pattie Menzies, was always on hand to bowl the first ball, after which she moved



to the croquet lawn where she made a speech and wielded the mallet to guide the first ball through the hoop.

The Club was very active for many years, but it appears that interest declined in the latter part of the 20th century and in 1998 it closed. It was repurposed to become the home of Interchange Inner

East and the Canterbury Community Garden from 2000 to 2020 when it was again closed to be refurbished and extended to form the focus of the recently opened Canterbury Community Precinct.

With thanks to Libby Wilson, Secretary of the Canterbury History Group who provided the material for the article.

Community garden

After a three-year hiatus during construction, the Canterbury Community Garden will soon return to its home of over 20 years. With a brand-new patch to grow in, the space will be blooming marvelous in no time as the plots and communal spaces are filled with edibles of all kinds.





Cherry tree lives on in new home

After 76 years in Boronia Street, Canterbury Norwood Kindergarten has moved to become **Canterbury Gardens Kindergarten** in the new Precinct.

Belong, Grow, Blossom, lives on in the kinder's new home.

While the much-loved cherry tree in its back garden could not be moved, the learning philosophy which it inspired, Belong, Grow, Blossom, lives on in the kinder's new home.

And, enabled by a special gift from a local resident, its wood lives on in furniture and accessories for a tree house built for its new premises.

Ian Wallbridge (pictured right), a retired teacher and canoe enthusiast who enjoys woodworking in his spare time, made his first tree house more than 15 years ago for a nearby centre where his wife worked as a kindergarten teacher. He then made one for each of his four grandchildren. After some gentle cajoling, he agreed to make one for the Canterbury Gardens Kindergarten.

Built from a eucalypt log, the tree house is made by using the natural shape of the log, with segments carefully



positioned to create a tree. Wood from the old cherry tree has been used for furniture and accessories, working with strips of leather and gum nuts for decorative features.

Ian credits his granddaughter for inspiring and critiquing many of the imaginative details, that include a helicopter, a pulley lift, swings, bridges and ladders. The natural bark is left on pieces for the children to gently strip off over time and Ian uses tiny wooden pegs and glue to avoid metal screws or nails.

The result is a magical tree house that fires the imagination and is sure to delight all ages for many years to come.



Karen Szabo, Kindergarten Teacher and Director

Karen has worked at Canterbury Gardens Kindergarten for over 20 years and is the mother of four children.



Left: Ian Wallbridge revealing some of the little imaginative secrets he included in his specially crafted tree house

3 year old and 4 year old programs
Phone: (03) 9836 0305
Email: Enrolments@canterburygardenskinder.com.au



Playstation gets a purpose-built new home

PlayStation Occasional Care has been operating within the former Canterbury Library building since the early 1980s. And whilst the staff have built a caring and engaging program, they have had to adapt to a building not built for childcare. However, all that is about to change with their relocation to the Canterbury Community Precinct.



Kelly O'Meara, Education Leader at Playstation

Kelly is also excited about being part of a larger facility with both an early years and wider community focus.

'We are so excited to have a purpose-built Occasional Care Centre', says Education Leader, Kelly O'Meara. 'Everything, inside and out has been developed and made with young children in mind.'

Built on a commitment to a safe, caring and stimulating environment, Playstation is passionate about providing a range of experiences designed to encourage children to participate, explore their world and grow in all areas of their development.





This delightful cubby at the new Playstation, is ready to be explored

Having stood alone from other centres for so many years, Kelly is also excited about being part of a larger facility with both an early years and wider community focus. “We look forward to finding ways to collaborate with all the other tenants, supporting each other and sharing this amazing space.”

Playstation offers care for little ones aged 6 weeks to 5 years, 5 days a week. It is a home away from home for the children of Canterbury and surrounds, and a

welcome respite for parents and carers too! And staff love seeing little faces and personalities grow.



PLAYSTATION
occasional care

Exceptional occasional care in Canterbury for your little ones from 6 weeks to 5 years.

Phone: (03) 9118 8880 Email: membership@playstationcanterbury.com



Canterbury Toy Library – so much more than toys

In 2022, approximately 27 million toys were thrown away by Australian families, with more than 50% of toys ending up in landfill within 12 months of purchase.

Canterbury Toy Library caters for children from 6 months upwards, offering musical instruments, dress-up costumes, construction sets and active ride-ons for loan.

Offering 1,300 high quality new and vintage toys, Canterbury Toy Library caters for children from 6 months upwards, offering musical instruments, dress-up costumes, construction sets and active ride-ons for loan. The Library also offers Party Hire Packs, with climbing frames, ball pits and giant foam shapes, perfect for preschool birthday parties.

But the toy library offers much more than toys including a growing collection of board games and puzzles for all ages, including adults.



“The thing board games do better than anything else is getting people together into a room and having a bit of fun” explains Helen Dudley, Toy Library Coordinator. Board games teach important life skills such as turn taking, sharing, being a team player and being a good loser.

It’s not just young families who are enjoying the toys, but grandparents are finding Toy Library membership comes in handy caring for grandkids, especially over the school holidays.

Situated at the front door of the Precinct, the Toy Library has become a star attraction for children on their way to Kindergarten and Playstation, with squeals of excitement at the window each day. Responding to growing demand, the Library has expanded its opening hours and offers click and collect for busy families.

Recently the Toy Library was awarded a Vic Health’s JumpStart grant to deliver a series of free stay and play sessions for children aged 2 to 8 years, in partnership with Canterbury Neighbourhood Centre. Bookings are available through contacting the Library or CNC.

Canterbury Toy Library is a community organization run by members. Membership involves an annual fee as well as 3 volunteer sessions or a small voluntary levy. Volunteers welcome.



...grandparents are finding Toy Library membership comes in handy caring for grandkids, especially over the school holidays.



Opening hours: Wednesdays: 12.30pm to 3.15pm
Fridays: 9.30am to 12.15pm Saturdays: 9.30am to 12.15pm
Enquiries visit their website www.canterburytoylibrary.com.au
or call Canterbury Community Precinct reception on 9830 4214



Canterbury Community Precinct Stage 2 Update

The second stage of the Canterbury Community Precinct project involves the refurbishment of two additional existing buildings, which are located in Canterbury Gardens.

The former Canterbury Public Library will be restored to become the Heritage Centre, home to Surrey Hills Historical Society and the Canterbury History Group, and their extensive archival collections.

The former Maternal Child Health (MCH) Centre, located on Kendall Street across from Chaucer Reserve, will be redeveloped to provide improved spaces for Interchange Inner East.

Work on Stage 2 will commence April 2023 with an expected completion date by September 2023.

Images, from the top:
*The old Canterbury Library,
the former Maternal Child
Health Centre and a rendering
of the Heritage Centre*



have a chat

AND RECONNECT

Chatty Café

is coming to Canterbury

We believe having a chat can brighten your day.

The Chatty Café scheme is a charity that provides opportunities for people to come together and "Have a Chat".

Join us on **Wednesday 10 May** as we launch our first Chatty Café session as part of **Victorian Neighbourhood House Week 8-14 May**.

Chatty Café
Canterbury Community Precinct
2 Kendall St Canterbury
Wednesdays 10am to 11am



All welcome



Canterbury Community Precinct Open Day

**Saturday 20 May
2 Kendall Street, Canterbury
10am - 1pm**

**Come along and enjoy our first
Community Precinct Open Day**

**Centre tours
Food and drinks
Free craft activities
Toy Library and more!
All welcome**